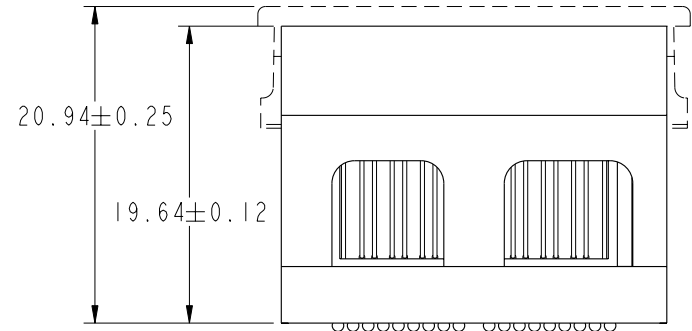
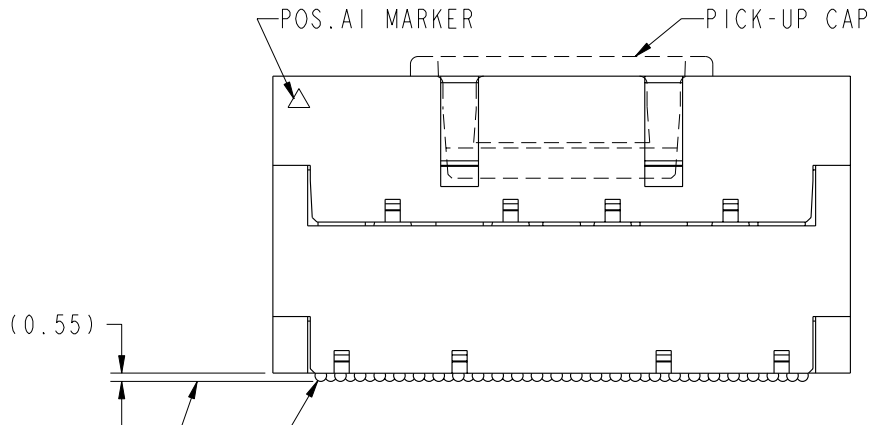
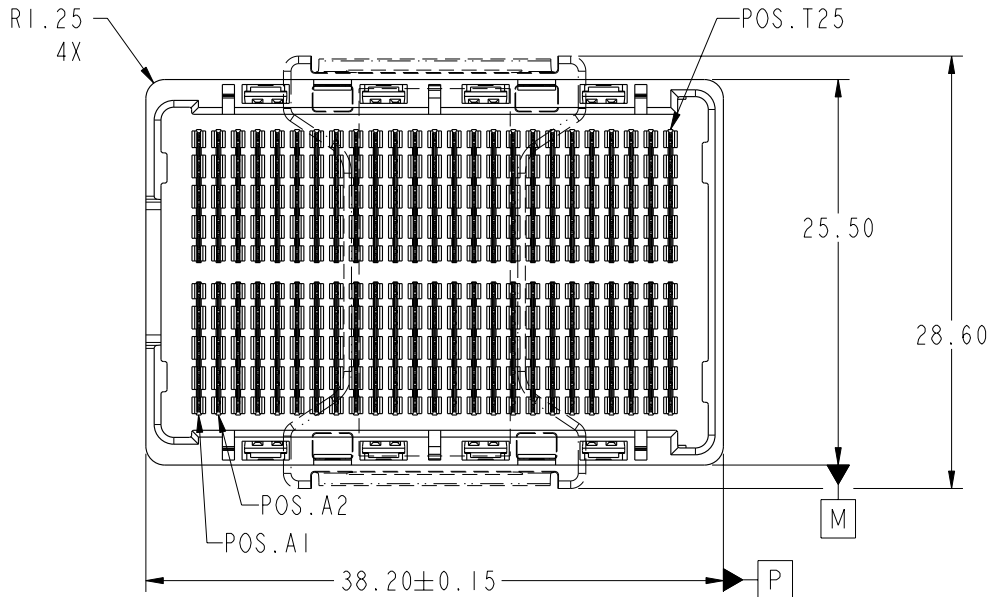




This document is the property of and embodies CONFIDENTIAL and PROPRIETARY information of FCI. No part of the information shown on this document may be used in any way or disclosed to others without the written consent of FCI. Copyright FCI.



0.20

Ø0.76 SOLDER BALLS
 Ø0.30 P M
 450X
 SEE NOTE 2

mat'l code				SEE NOTE 1		tolerances unless otherwise specified		CUSTOMER		FCI www.fciconnect.com		
ltr	ecm no.	dr	date	linear	0.X ± 0.3		COPY		title GIG-Array 20mm PLUG ASSY. 200 SIG. POS.			
A	V04-0481	TAB	05/10/04		0.XX ± 0.10		projection					
B	V05-0052	VS	10/16/05		0.XXX ± 0.050		MM					
C	V06-0558	LP	2006/06/12	angles	0° ± 2°		scale		product family GIG-Array code 213			
				dr	R. JOHNSON	1/2/02	1:1		size		sheet 1 of 4	
				enrg	D. JOHNESCU	1/2/02			dwg no		55739	
				chr	D. JOHNESCU	1/2/02			A			
				appd	D. JOHNESCU	1/2/02						
sheet index	revision sheet	C 1	C 2	C 3	C 4							

cage code 22526

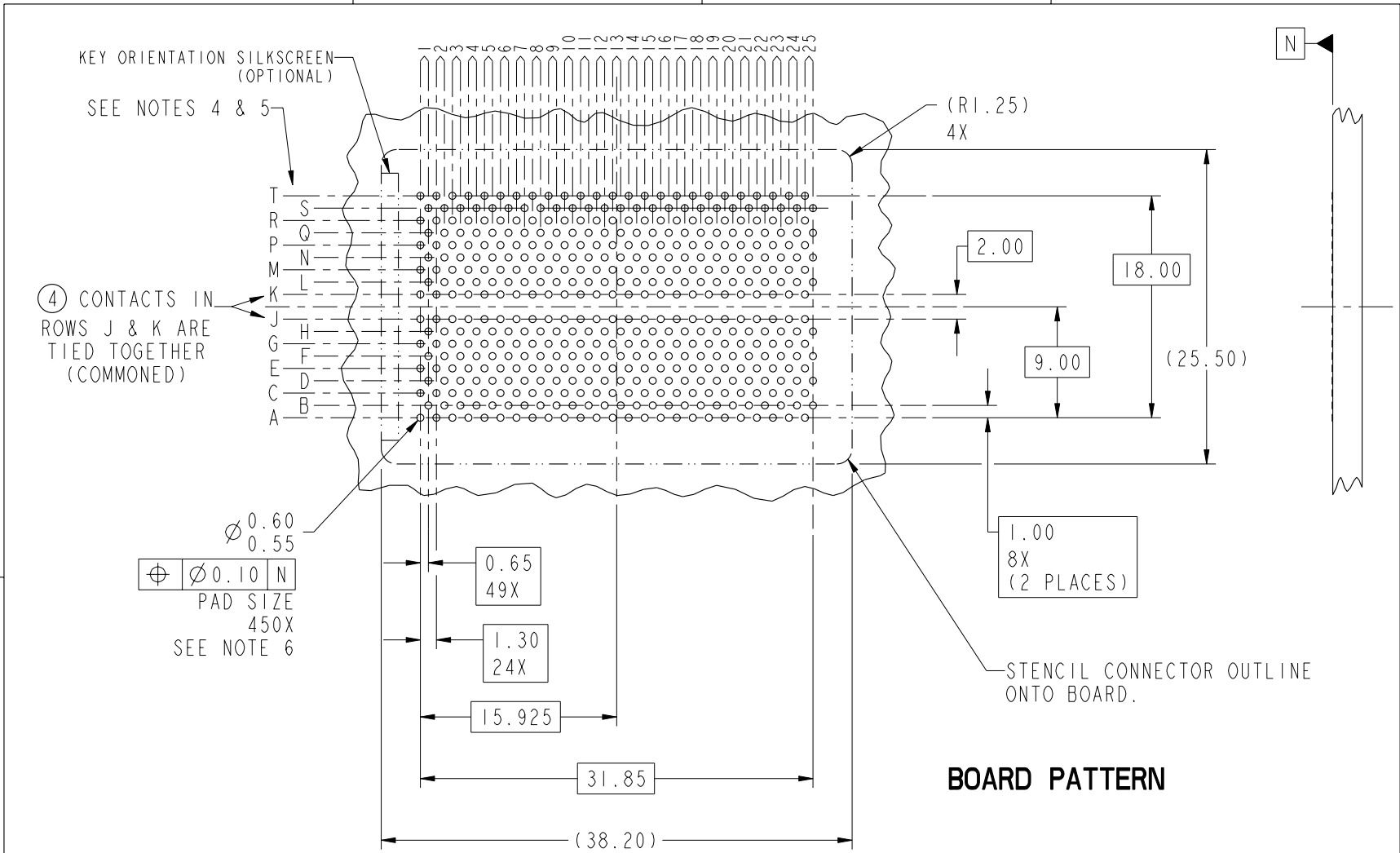
Pro/E

PDM: Rev:C

STATUS: Released

Printed: Dec 03, 2007

This document is the property of and embodies
 CONFIDENTIAL and PROPRIETARY information of FCI.
 No part of the information shown on this
 document may be used in any way or disclosed
 to others without the written consent of FCI.
 Copyright FCI.



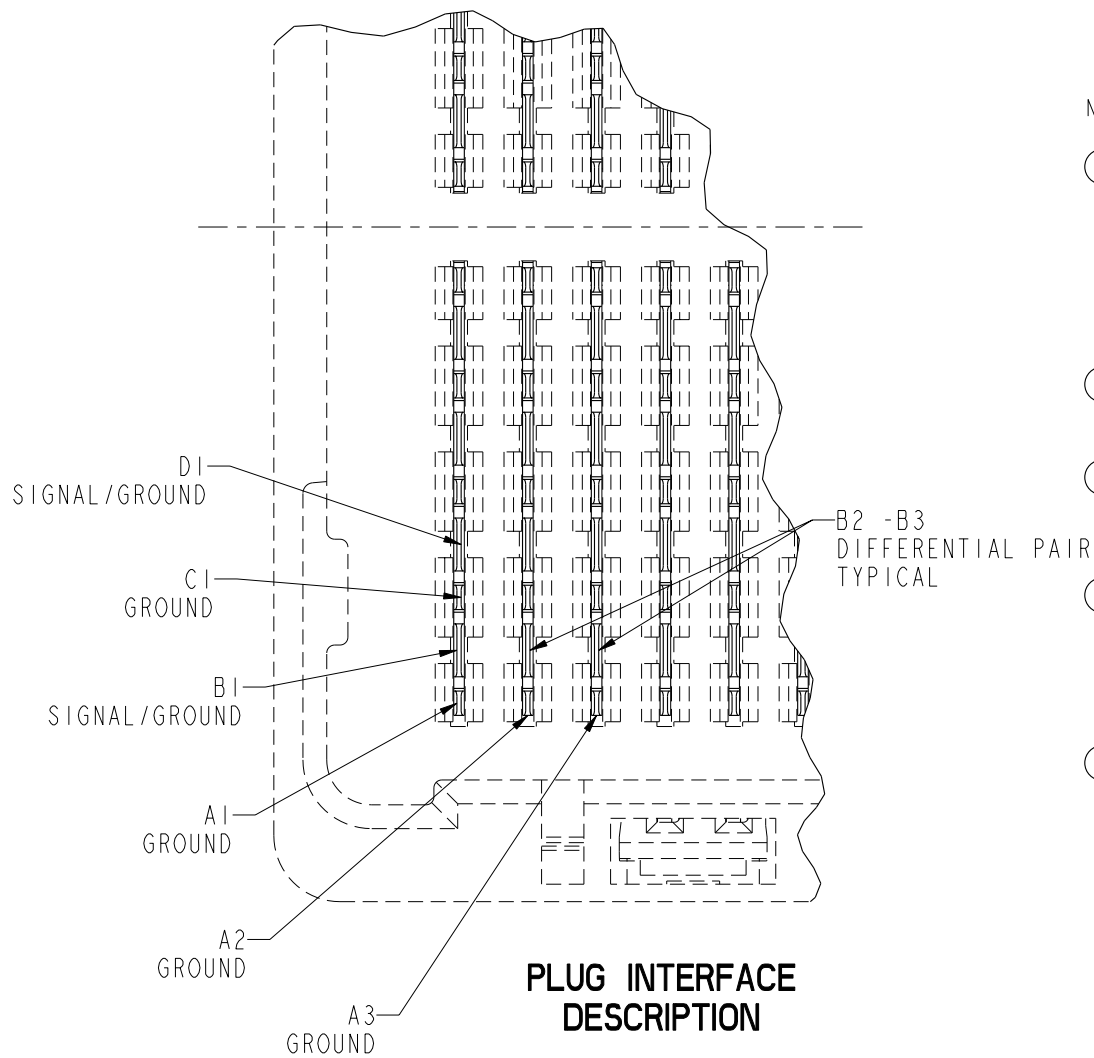
$\varnothing 0.60$
 $\varnothing 0.55$
 $\varnothing 0.10$ N
 PAD SIZE
 450X
 SEE NOTE 6

BOARD PATTERN

mat'l code				SEE NOTE 1		tolerances unless otherwise specified		CUSTOMER		www.fciconnect.com	
ltr	ecr no.	dr	date	linear	0.X ±0.3		COPY			title	
C	-	-	-		0.XX ±0.10		MM			GIG-Array	
					0.XXX ±0.050		←			20mm PLUG ASSY. 200 SIG. POS.	
				angles	0° ±2°		scale		product family		
				dr	R. JOHNSON	1/2/02	2:1		GIG-Array		
				enr	D. JOHNESCU	1/2/02			code		
				chr	D. JOHNESCU	1/2/02			size		
				appd	D. JOHNESCU	1/2/02			dwg no		
sheet index		revision sheet						A		55739	
										213	
										sheet	
										2	

cage code 22526

Pro/E



NOTES:

- ① MATERIAL:
HOUSING: LCP
CONTACT: COPPER ALLOY
PLATING (CONTACT): Au OVER Ni.
UL RATING: 94 V-0
SOLDER BALL: (SEE TABLE) EUTECTIC SnPb OR LEADFREE 95.5 Sn/4Ag/0.5Cu
- ② SOLDER BALLS WILL NOT BE PERFECT SPHERICAL SHAPE DUE TO REFLOW ATTACHMENT.
- ③ MATED HEIGHT EFFECTED BY CUSTOMERS' PCB PAD SIZE, PLATING, SOLDER REFLOW PROFILE & SOLDER PASTE.
- ④ CONTACTS IN ROWS A,C,E,G,J,K,M,P,R AND T ARE SINGLE BEAM CONTACTS, TYPICALLY USED AS GROUND PINS. (NOTE: CONTACTS IN ROWS J & K ARE TIED TOGETHER [COMMONED])
- ⑤ CONTACTS IN ROWS B,D,F,H,L,N,Q AND S ARE DUAL BEAM CONTACTS, TYPICALLY USED AS SIGNAL PINS.

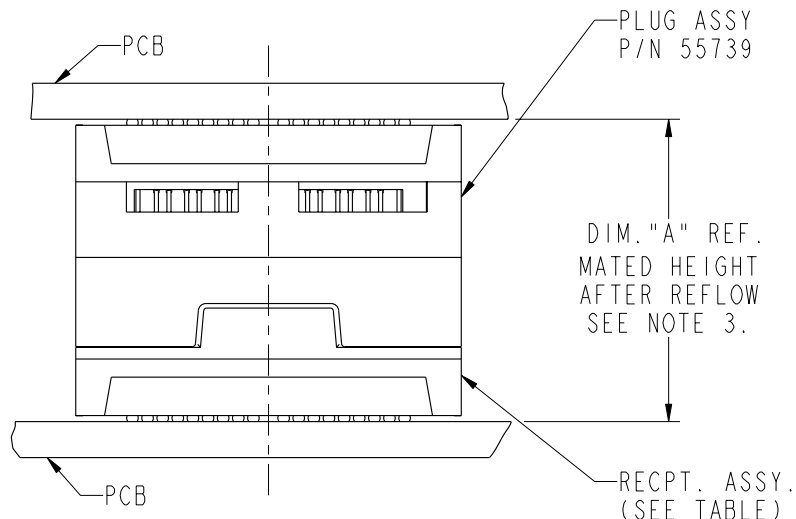
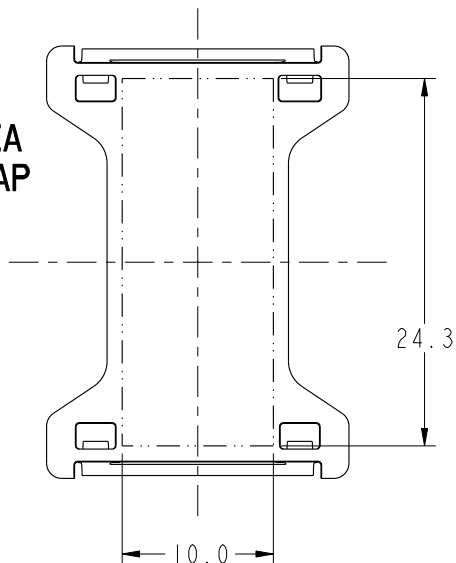


This document is the property of and embodies CONFIDENTIAL and PROPRIETARY information of FCI. No part of the information shown on this document may be used in any way or disclosed to others without the written consent of FCI. Copyright FCI.

mat'l code		SEE NOTE 1		tolerances unless otherwise specified		CUSTOMER		www.fciconnect.com	
ltr	ecr no.	dr	date	linear	0.X ±0.3		COPY		title GIG-Array 20mm PLUG ASSY. 200 SIG. POS.
C	-	-	-		0.XX ±0.10		projection		
					0.XXX ±0.050				
				angles	0° ±2°				product family GIG-Array
				dr	R. JOHNSON	1/2/02	scale 7:1		code 213
				enr	D. JOHNESCU	1/2/02	size A		sheet 3
				chr	D. JOHNESCU	1/2/02	dwg no 55739		
				appd	D. JOHNESCU	1/2/02	cage code 22526		
sheet index	revision sheet								

PRODUCT NUMBER	SOLDER BALL
55739-001	SnPb
55739-001LF	SnAgCu LEADFREE (7)(8)

FLAT AREA
PICK-UP CAP



END VIEW OF MATED CONNECTORS

DIM. "A"	RECPT. ASSY. P/N
25	55740
30	10026010
35	55741

NOTES CONTINUED

(6) SPECIFIED POSITIONAL TOLERANCE DEFINES PAD TO PAD LOCATION WITHIN LAND PATTERN. POSITIONAL TOLERANCE OF LAND PATTERN TO FUDICIAL MARKS OR PCB DATUMS SHALL BE DEFINED BY CUSTOMER. FOR RECOMMENDED PRODUCT APPLICATION AND PCB DESIGN DETAILS, SEE DOC. NO. GS-20-016.

(7) FOR PROPER APPLICATION FOLLOW FCI APPLICATION SPECIFICATION GS-20-033 LEADFREE SOLDER BALLS WILL NOT SOLDER PROPERLY IN A LEADED SOLDER PROCESS DUE TO A HIGHER REFLOW TEMPERATURE, LEADFREE PRODUCT IS THEREFORE NOT BACKWARDS COMPATIBLE WITH LEADED OR SOME SOLDERING APPLICATIONS. REFERENCE FCI APPLICATION SPECIFICATION.

(8) THIS PRODUCT MEETS THE EUROPEAN UNION DIRECTIVES AND OTHER COUNTRY REGULATIONS AS DESCRIBED IN GS-22-008. PRODUCT MEETING WITH THIS DIRECTIVE IS IDENTIFIED IN THE LOT CODE NUMBER MARKED ON EACH PART BY HAVING AN "X" IN THE SEVENTH CHARACTER POSITION.



This document is the property of and embodies
 CONFIDENTIAL and PROPRIETARY information of FCI.
 No part of the information shown on this
 document may be used in any way or disclosed
 to others without the written consent of FCI.
 Copyright FCI.

mat'l code		SEE NOTE 1		tolerances unless otherwise specified		CUSTOMER		FCI www.fciconnect.com				
ltr	ecn no.	dr	date	linear	0.X ±0.3	projection	COPY	title	GIG-Array 20mm PLUG ASSY. 200 SIG. POS.			
C	-	-	-		0.XX ±0.10							
					0.XXX ±0.050							
				angles	0° ±2°			product family	GIG-Array			
				dr	R. JOHNSON				1/2/02	size	dwg no	code
				engr	D. JOHNESCU				1/2/02			A
				chr	D. JOHNESCU	1/2/02	sheet	4				
				appd	D. JOHNESCU	1/2/02			scale	1:1		
sheet index	revision sheet											